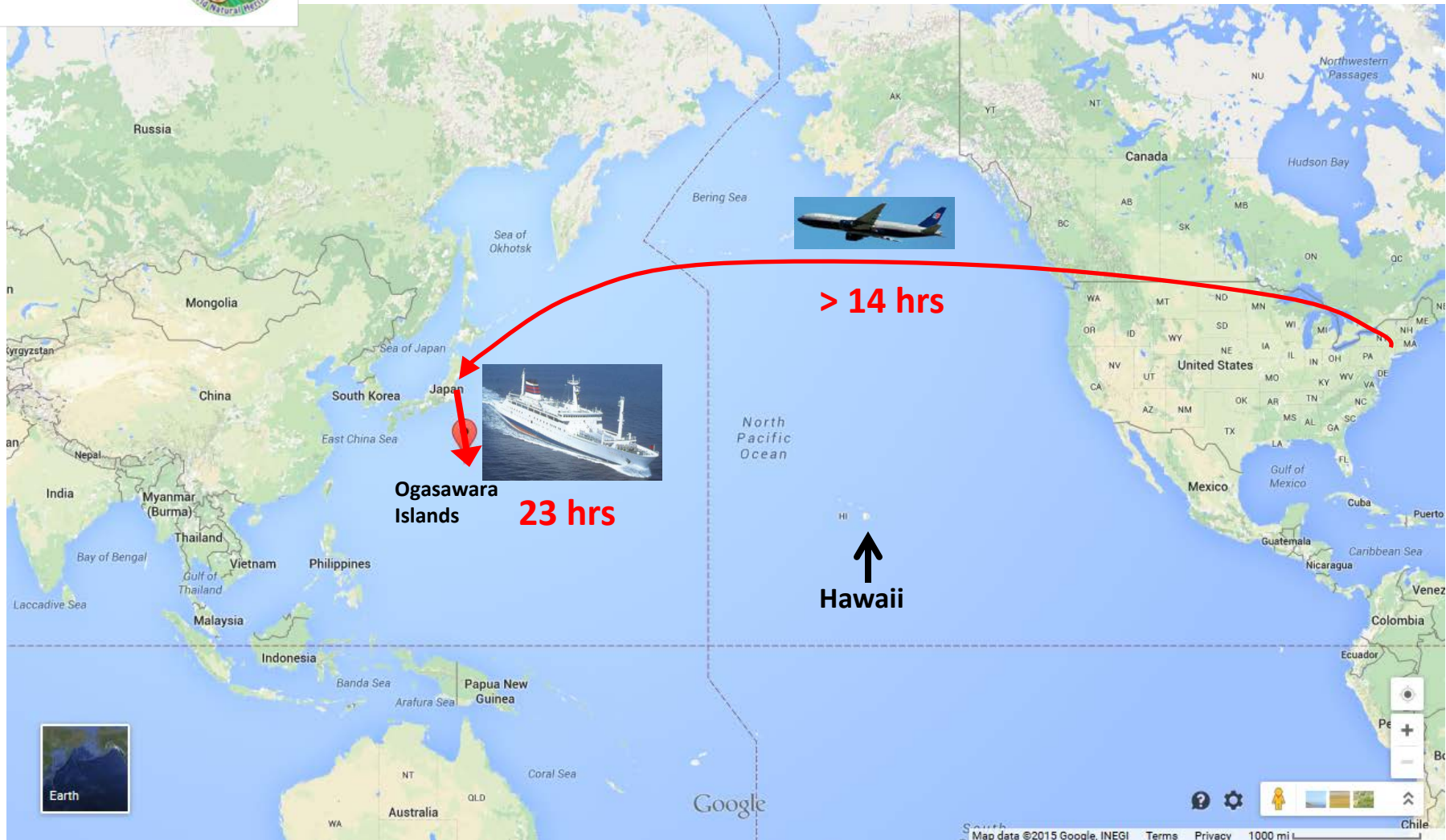




BIOL 294 (fall) & 271 (winter trip component) Global Study in Conservation and Sustainability



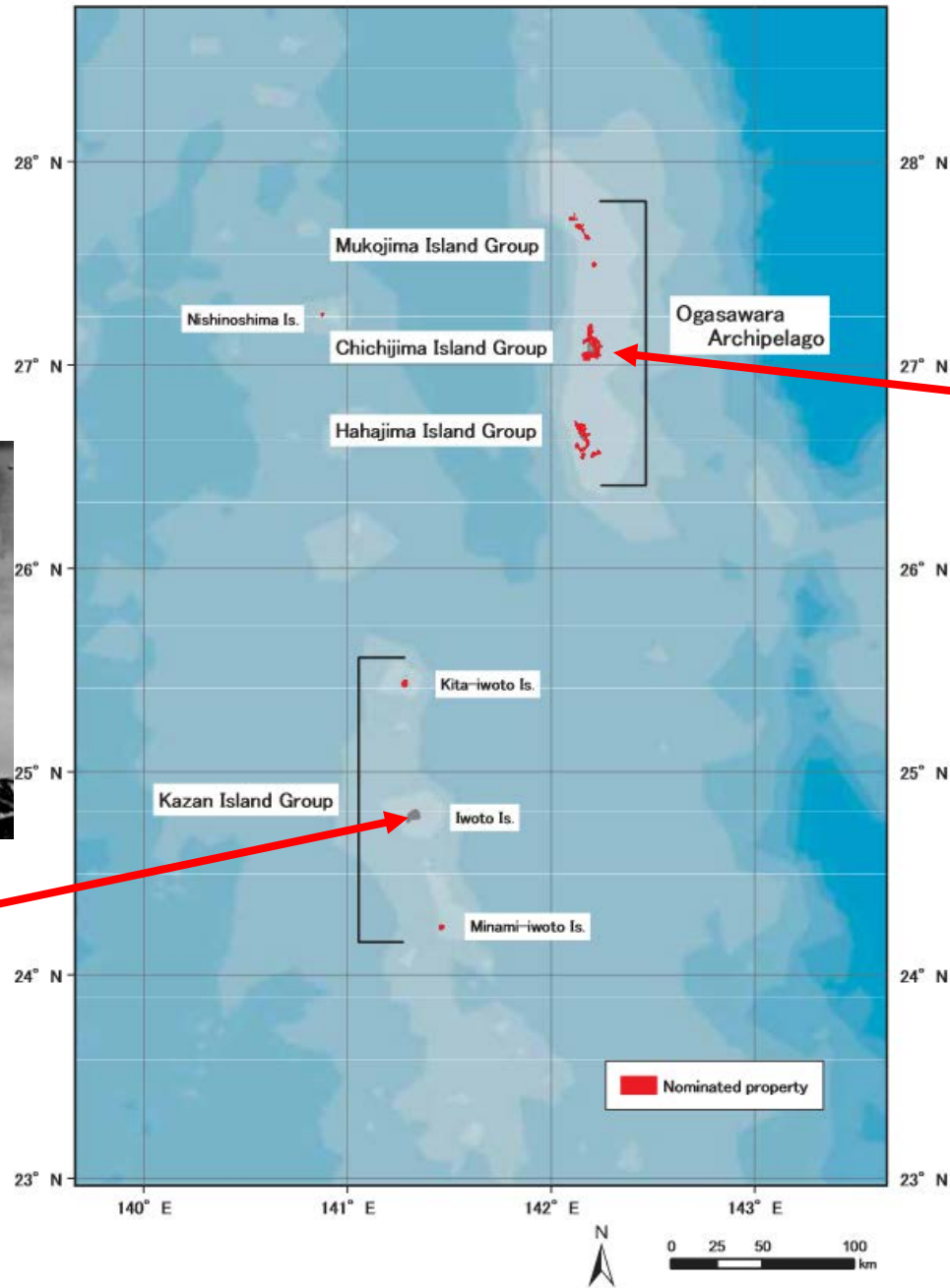
Chichi-jima, Ogasawara Islands, Japan



Raising the Flag on Iwo Jima, by Joe Rosenthal / The Associated Press



Iwo Jima



Chichi-jima

The original ecosystem of Ogasawara before humans and alien organisms arrived:

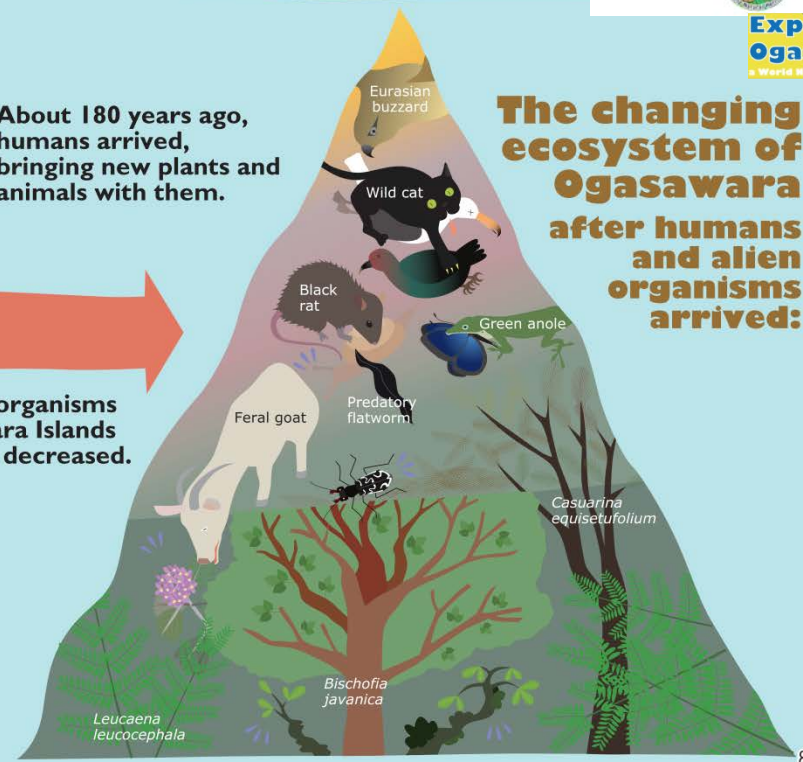


About 180 years ago, humans arrived, bringing new plants and animals with them.



The number of organisms on the Ogasawara Islands decreased.

The changing ecosystem of Ogasawara after humans and alien organisms arrived:



We will learn about challenges and solutions in **conserving the unique ecosystem** while promoting **sustainable development** on the islands through:

- **Pre-trip** collaborative international online learning (**COIL**) w/ Ogasawara High School and Tokyo Metropolitan University students
- **Lectures and tours by local experts** (marine animal conservation, whale/dolphin watching cruise, nature hikes, organic farm)
- **Service learning** (habitat restoration projects, beach/park clean up, Sea Turtle Ctr)
- **Historic** site tour and **cultural** activities (plant craft workshop, etc.)
- Compare and contrast lifestyles & values in **Ogasawara vs. Metro Tokyo**



BIOL 294 (fall) & 271 (winter trip component) Global Study in Conservation and Sustainability

Course logistics

- 2 semester hours for each course
- 2 hrs/wk lectures during Fall semester
plus 2.5 wks travel (end of Dec to mid-Jan)
- Prereqs
 - Sophomore standing AND
 - BIOL 180 OR ENVS 110 OR instructor permission
- Estimated cost (in addition to regular tuition and fees)
 - \$4800 (scholarships available from OIE)
 - Includes R/T airfare from NY, lodging, ferry fare & local transportation, meals, insurance



Questions? Contact Kiyoko.Yokota@oneonta.edu



Student videos online

From our 2016-7 trip:

- <https://www.youtube.com/watch?v=dcMADJ1-QpU>
- https://www.youtube.com/watch?v=8q5ldk5FR_k
- Also check out “Japan 271” group on Facebook for photos from the trip